



US011150861B1

(12) **United States Patent**
Thomas et al.

(10) **Patent No.:** **US 11,150,861 B1**
(45) **Date of Patent:** **Oct. 19, 2021**

(54) **APPARATUS AND METHOD FOR SIMULTANEOUS MULTI-USER SCREEN AND WINDOW SHARING, CAPTURING AND COORDINATION**

(71) Applicant: **CoScreen, Inc.**, Menlo Park, CA (US)

(72) Inventors: **Jason Thomas**, Menlo Park, CA (US);
Till Pieper, Menlo Park, CA (US);
Max Andaker, Menlo Park, CA (US)

(73) Assignee: **CoScreen, Inc.**, Menlo Park, CA (US)

(*) Notice: Subject to any disclaimer, the term of this patent is extended or adjusted under 35 U.S.C. 154(b) by 0 days.

(21) Appl. No.: **17/101,397**

(22) Filed: **Nov. 23, 2020**

Related U.S. Application Data

(60) Provisional application No. 63/044,049, filed on Jun. 25, 2020.

(51) **Int. Cl.**
G06F 3/0481 (2013.01)
G06F 3/14 (2006.01)
G06F 9/451 (2018.01)

(52) **U.S. Cl.**
CPC **G06F 3/1454** (2013.01); **G06F 3/0481** (2013.01); **G06F 9/452** (2018.02)

(58) **Field of Classification Search**
CPC G06F 3/1454; G06F 3/0481; G06F 9/452; G06F 3/048

See application file for complete search history.

(56) **References Cited**

U.S. PATENT DOCUMENTS

2010/0192066	A1*	7/2010	Wu	G06F 16/64
					715/727
2011/0202843	A1*	8/2011	Morris	G06F 9/451
					715/716
2014/0282072	A1*	9/2014	Martinez	G06F 3/04812
					715/748
2015/0133048	A1*	5/2015	Shimoji	H04L 67/34
					455/41.1
2015/0227291	A1*	8/2015	Wang	G06F 3/0481
					345/173
2015/0242086	A1*	8/2015	Mindlin	G06Q 30/0269
					715/769
2017/0180472	A9*	6/2017	Cuzzort	H04L 65/1089
2017/0357437	A1*	12/2017	Peterson	G06F 3/0486
2019/0155625	A1*	5/2019	Lu	G06F 3/0485

* cited by examiner

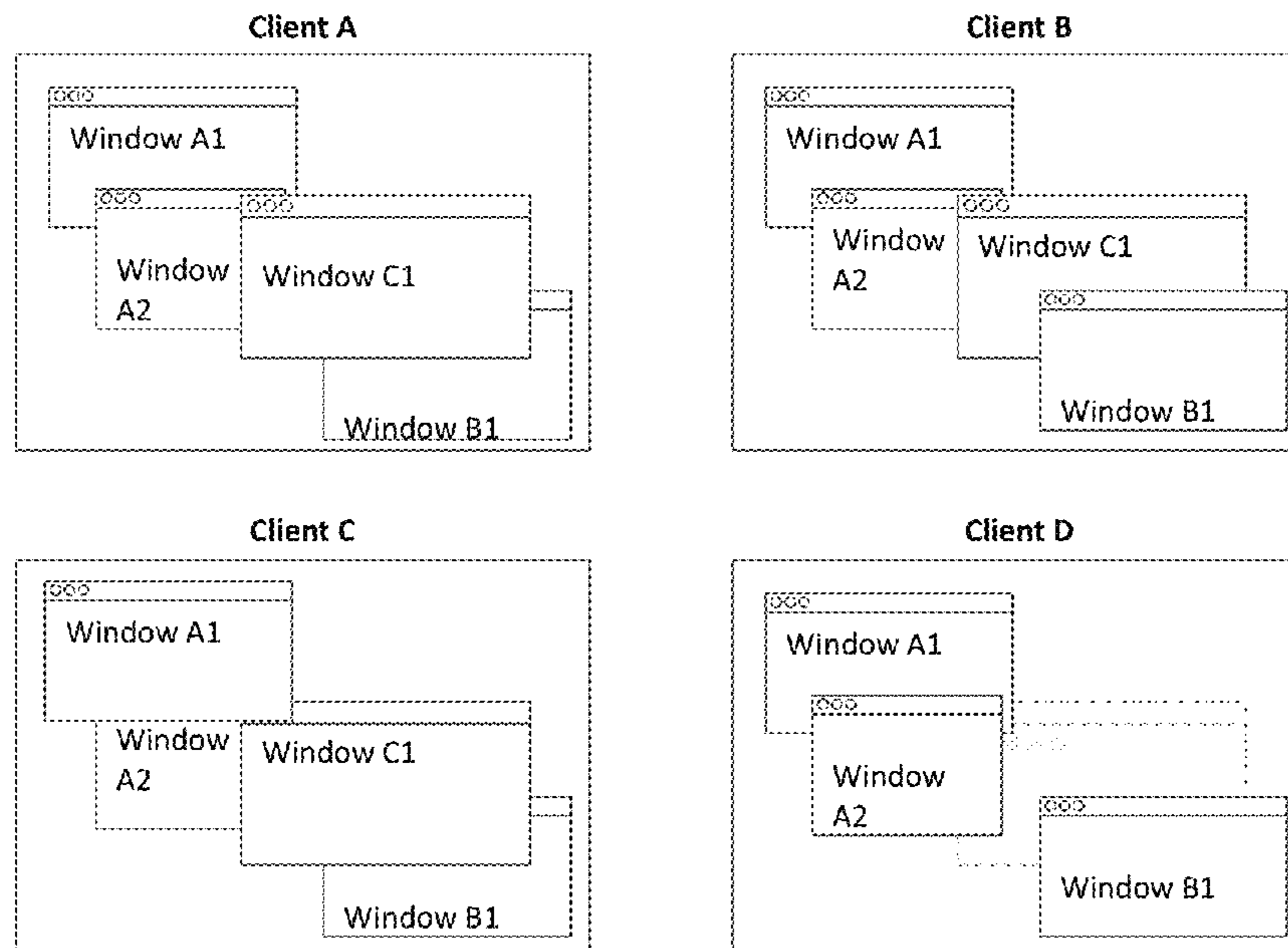
Primary Examiner — Jeanette J Parker

(74) *Attorney, Agent, or Firm* — Cooley LLP

(57) **ABSTRACT**

A non-transitory computer readable storage medium has instructions executed by a processor to specify a group of collaborators. Each collaborator in the group of collaborators is polled for window information for each window to be shared among the collaborators in a composite window collection. The window information includes end user device attributes for each collaborator and window metadata for each window to be shared among the collaborators in the composite window collection. Required parameters are calculated for each window to be shared among the collaborators in the composite window collection. The required parameters include window visibility criteria in the composite window collection. Sending clients in the group of collaborators are instructed on required parameters for each window to be shared among the collaborators in the composite window collection.

39 Claims, 7 Drawing Sheets



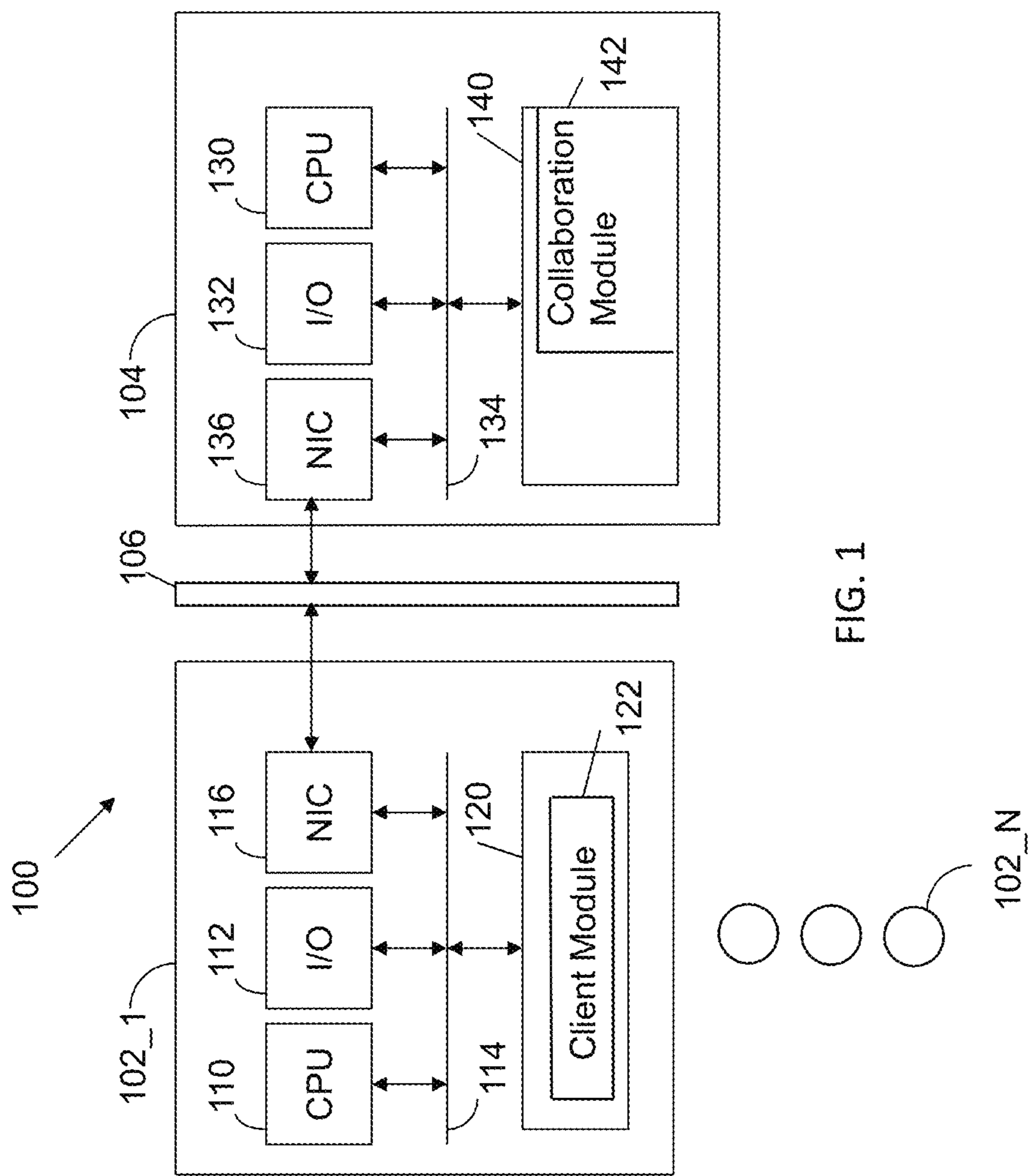


FIG. 1

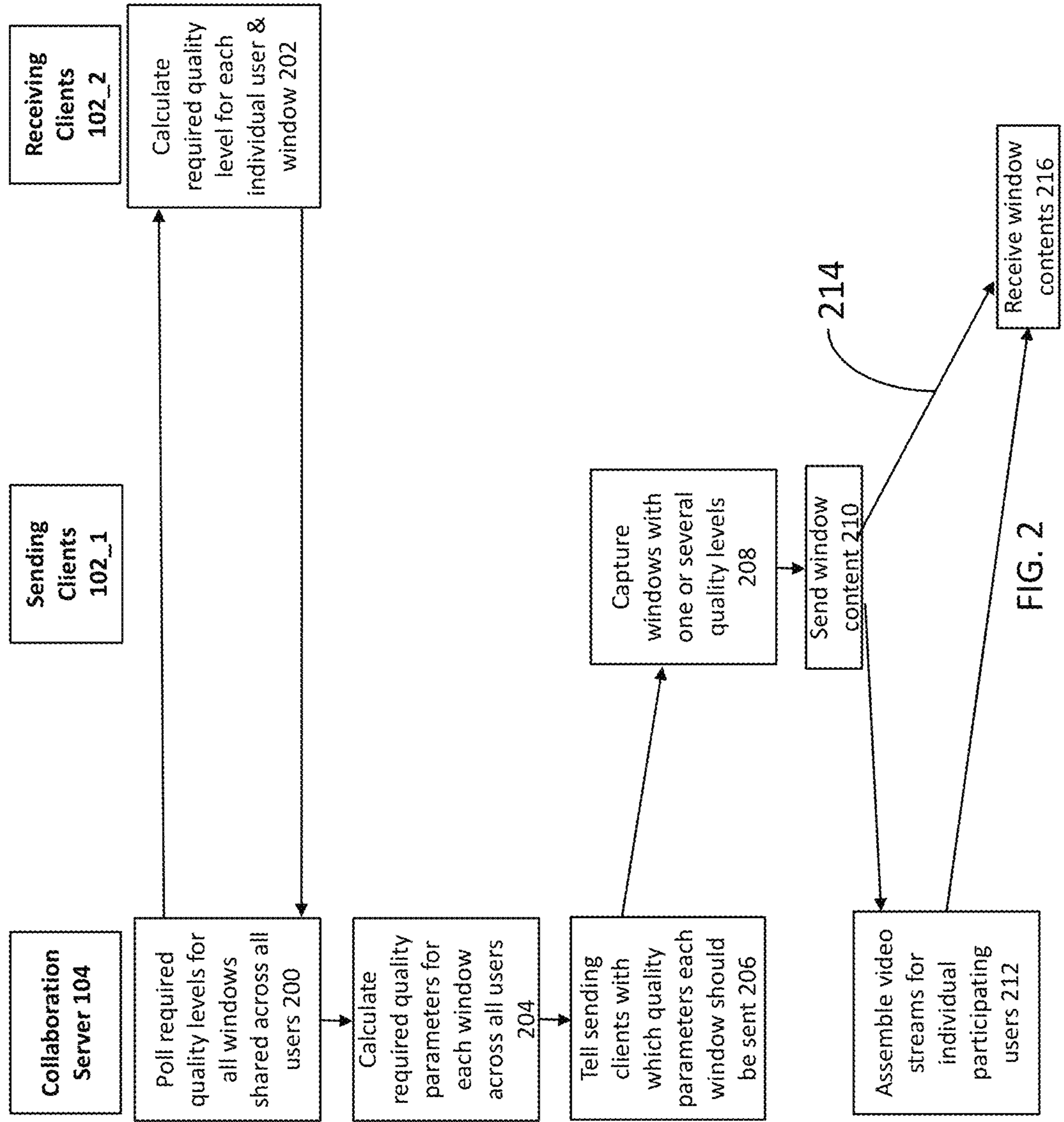


FIG. 2

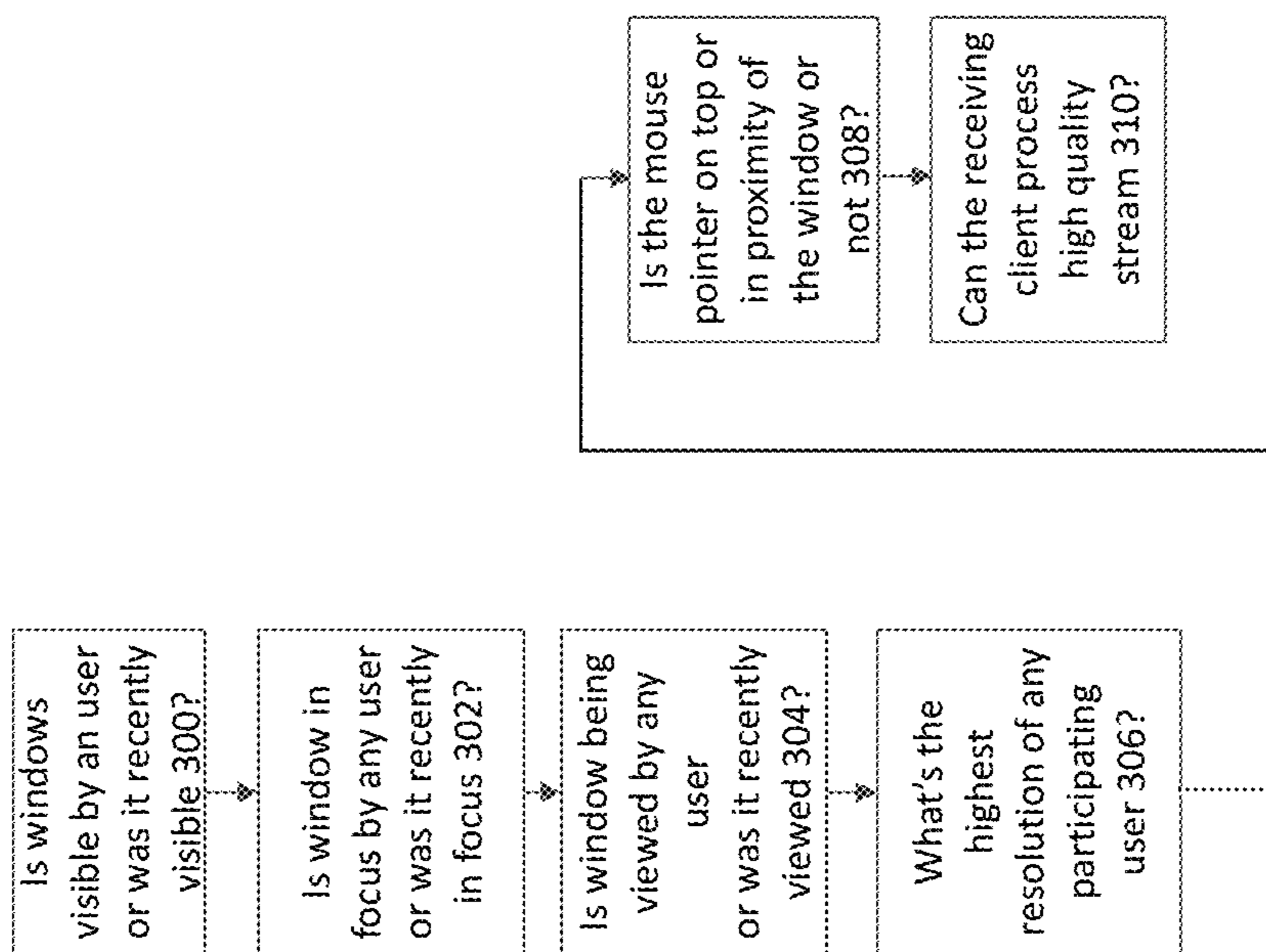


FIG. 3

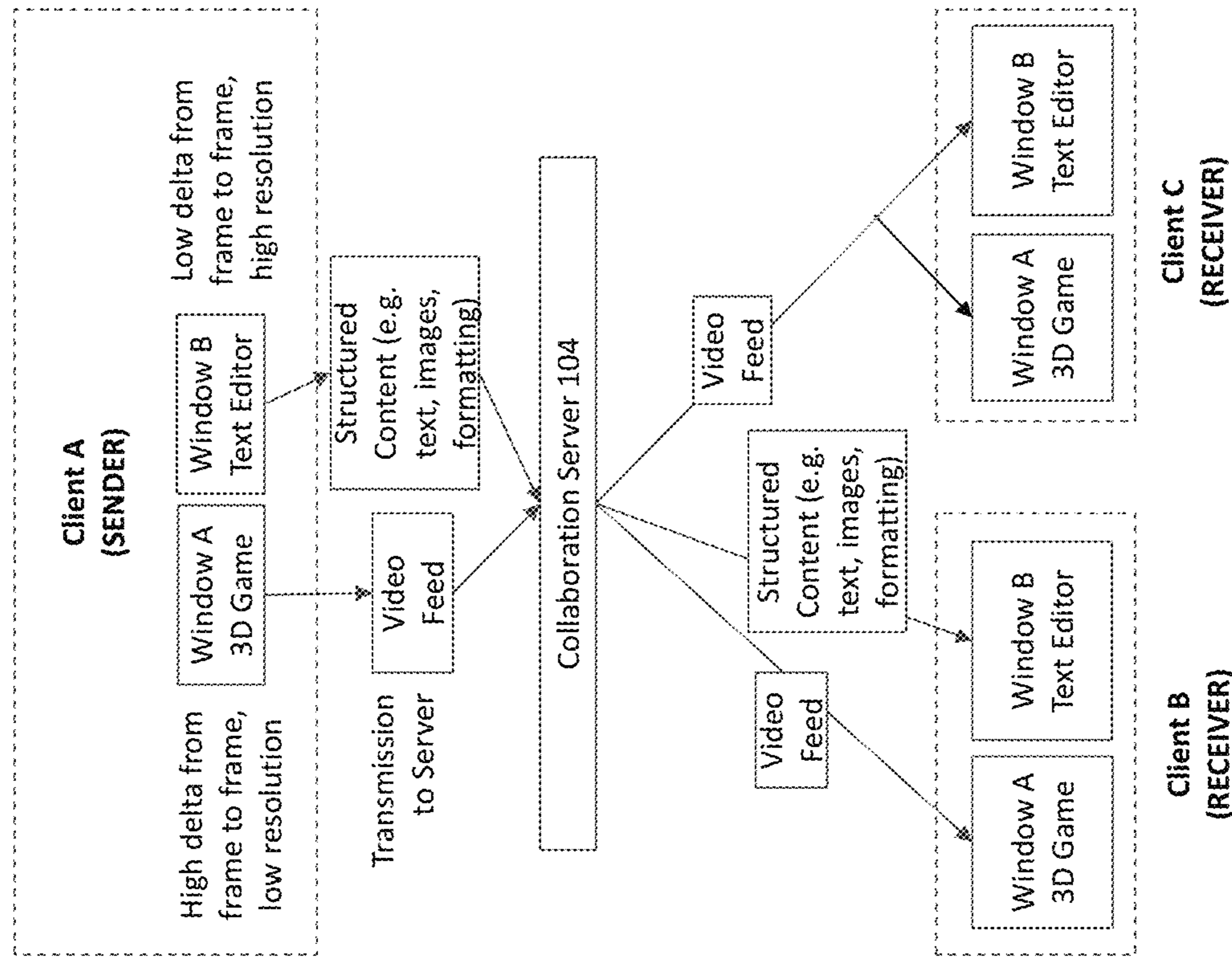


FIG. 4

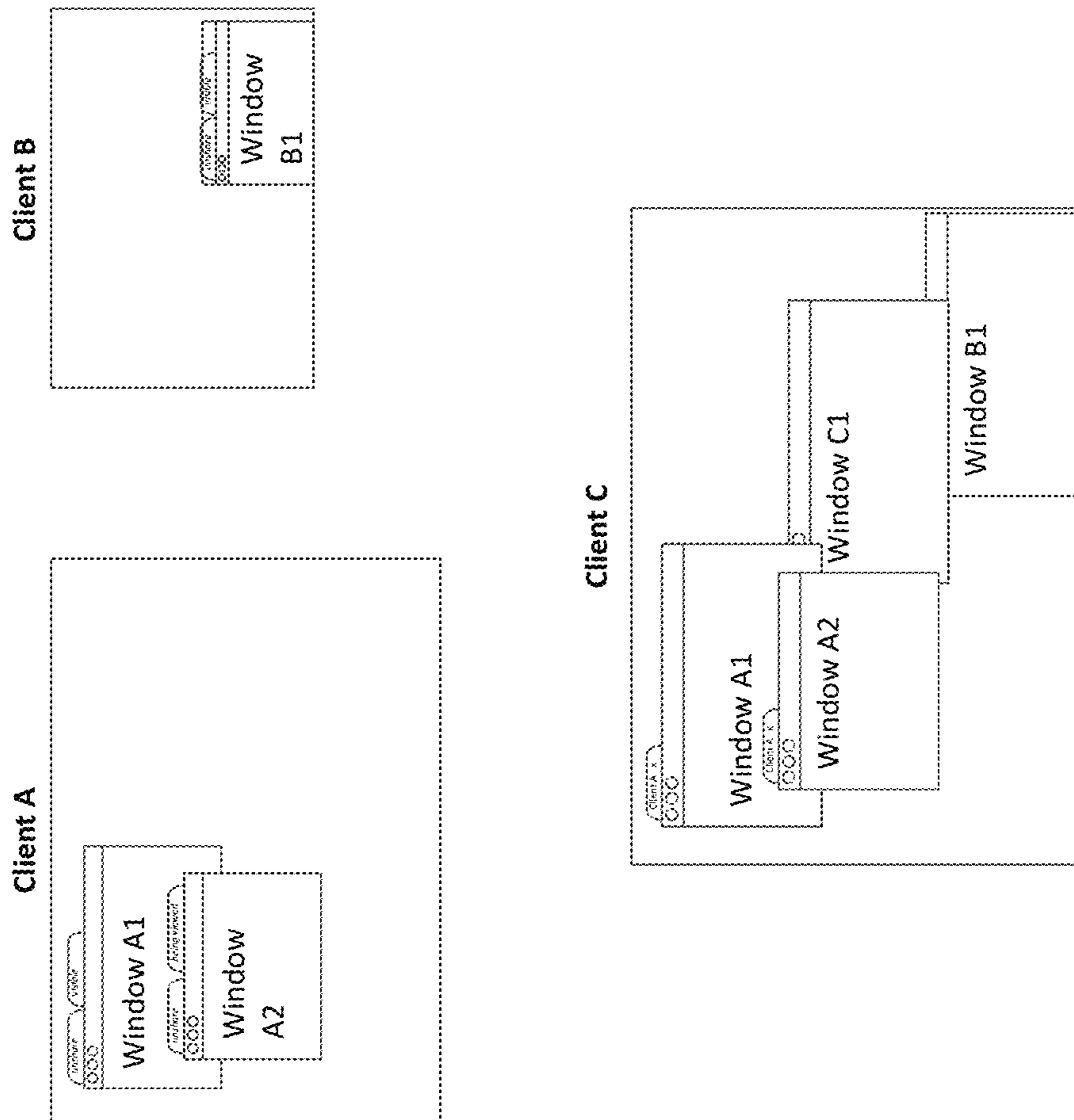


FIG. 5

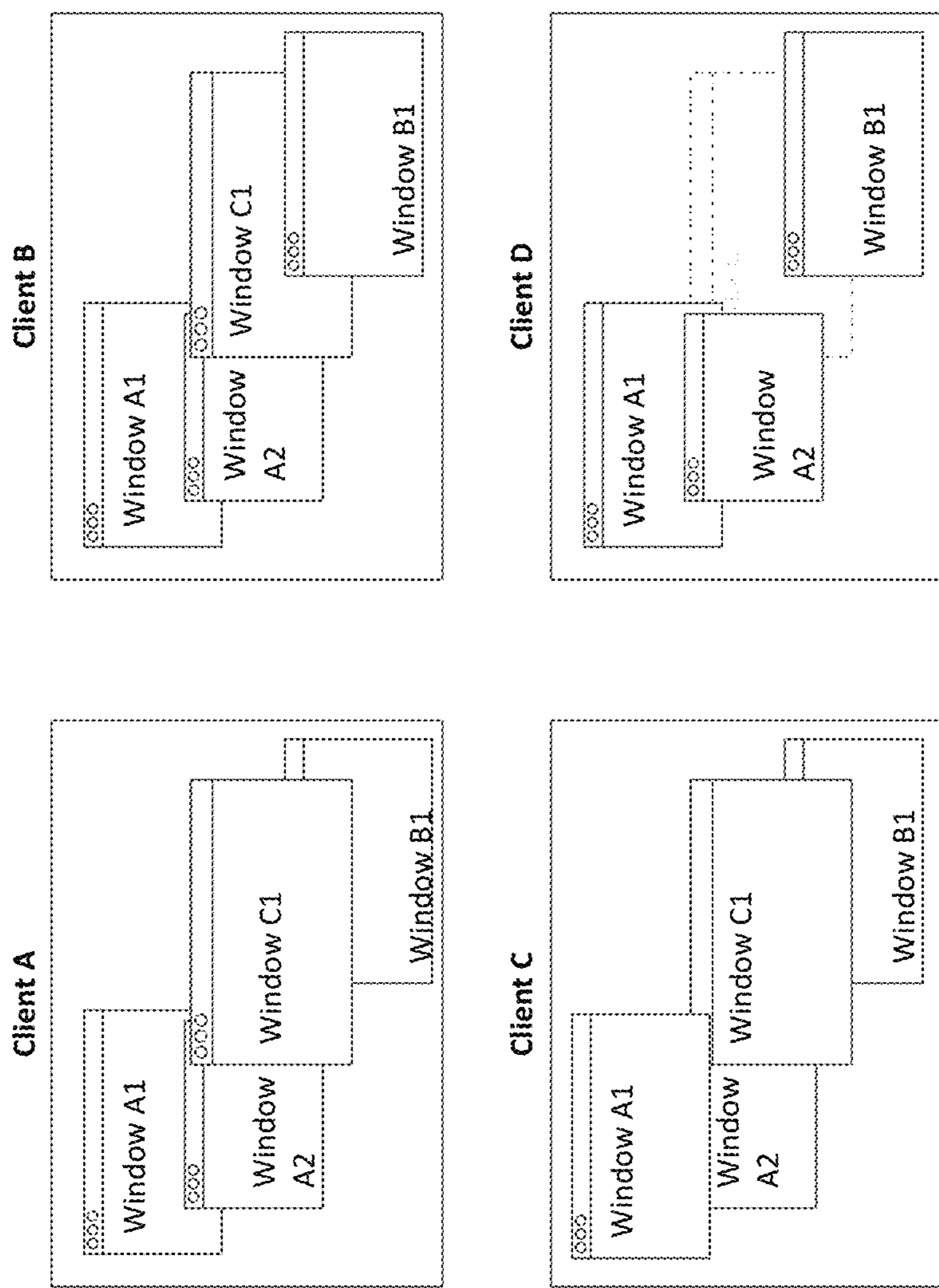


FIG. 6

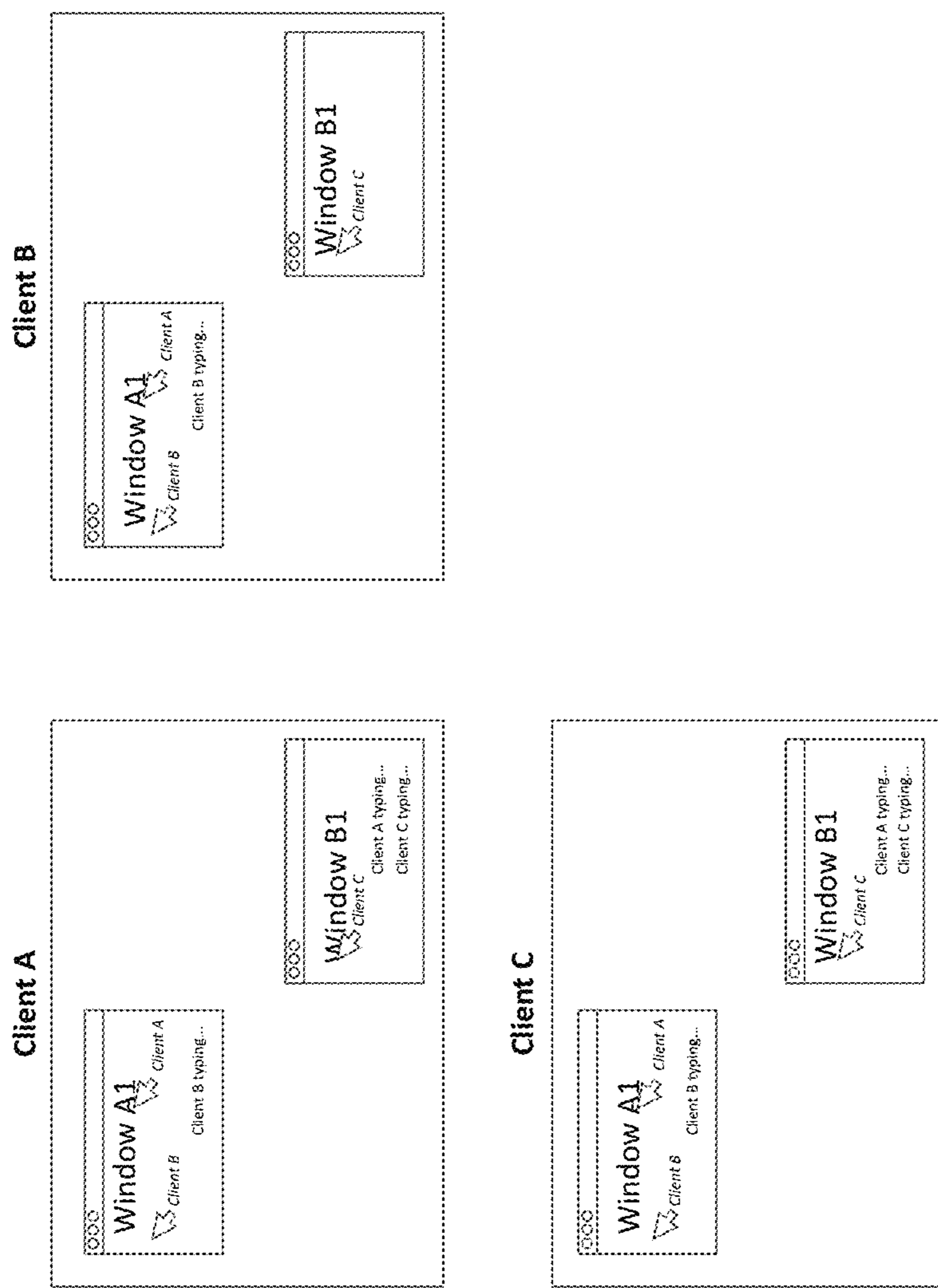


FIG. 7

1

**APPARATUS AND METHOD FOR
SIMULTANEOUS MULTI-USER SCREEN
AND WINDOW SHARING, CAPTURING AND
COORDINATION**

CROSS-REFERENCE TO RELATED
APPLICATION

This application claims priority to U.S. Provisional Patent Application Ser. No. 63/044,049, filed Jun. 25, 2020, the contents of which are incorporated herein by reference.

FIELD OF THE INVENTION

This invention relates generally to computer network communications. More particularly, this invention is directed toward techniques for simultaneous multi-user screen and window sharing, capturing and coordination.

BACKGROUND OF THE INVENTION

As remote work grows in popularity, there is a need for improved computer network communications between collaborating workers. Computer network communications between collaborating workers is complicated by different capabilities of different user devices, such as different operating systems, video resolutions and network connection speeds.

Thus, there is a need for improved computer network communications for collaborating workers.

SUMMARY OF THE INVENTION

A non-transitory computer readable storage medium has instructions executed by a processor to specify a group of collaborators. Each collaborator in the group of collaborators is polled for window information for each window to be shared among the collaborators in a composite window collection. The window information includes end user device attributes for each collaborator and window metadata for each window to be shared among the collaborators in the composite window collection. Required parameters are calculated for each window to be shared among the collaborators in the composite window collection. The required parameters include window visibility criteria in the composite window collection. Sending clients in the group of collaborators are instructed on required parameters for each window to be shared among the collaborators in the composite window collection.

BRIEF DESCRIPTION OF THE FIGURES

The invention is more fully appreciated in connection with the following detailed description taken in conjunction with the accompanying drawings, in which:

FIG. 1 illustrates a system configured in accordance with an embodiment of the invention.

FIG. 2 illustrates communications between a collaboration server, sending clients and receiving clients in accordance with an embodiment of the invention.

FIG. 3 illustrates configuring quality levels for shared windows in accordance with an embodiment of the invention.

FIG. 4 illustrates different approaches for sharing individual windows in accordance with an embodiment of the invention.

2

FIG. 5 illustrates multi-window sharing in accordance with an embodiment of the invention.

FIG. 6 illustrates all-to-all window sharing in accordance with an embodiment of the invention.

FIG. 7 illustrates multi-user window sharing with remote control input in accordance with an embodiment of the invention.

Like reference numerals refer to corresponding parts throughout the several views of the drawings.

DETAILED DESCRIPTION OF THE
INVENTION

FIG. 1 illustrates a system **100** configured in accordance with an embodiment of the invention. The system **100** includes a set of client devices **102_1** through **102_N**, which may be sending or receiving devices. Each client device **102_1** through **102_N** is connected to a network **106**, which may be any combination of wired and wireless networks. A collaboration server **104** is also connected to network **106**.

Client device **102_1** includes a processor (e.g., a central processing unit or CPU) **110** and input/output devices **112** connected via a bus **114**. The input/output devices **112** may include a keyboard, mouse, touch display and the like. A network interface circuit **116** is also connected to the bus **114** to provide connectivity with network **106**. A memory **120** is also connected to the bus **114**. The memory **120** stores a client module **122** with instructions executed by processor **110** to implement operations disclosed herein. Client device **102_1** may be a desktop computer, laptop computer, tablet, smartphone and the like.

Collaboration server **104** includes a processor **130**, input/output devices **132**, a bus **134** and a network interface circuit **136**. A memory **140** is connection to bus **134**. The memory **140** stores a collaboration module **142** with instructions executed by processor **130** to implement operations disclosed herein.

The collaboration module **142** facilitates remote control and simultaneous sharing of multiple application windows by multiple users operating client devices **102_1** through **102_N**. The multiple users are collaborators that share a composite window collection.

FIG. 2 illustrates interactions between collaboration server **104**, a sending client **102_1** and a receiving client **102_2**. Initially, the collaboration server polls the client devices for the required quality levels of all windows shared across all users **200**. The users are collaborators that selectively submit windows from client devices to a composite window collection that appears on at least on client device associated with the group of collaborators.

Receiving clients **102_2** calculate required window quality information for each individual user and window **202** and pass this information to the collaboration server **104**. The information may include window metadata.

Required quality level information requested by the collaboration server **104** includes end user device attributes for each collaborator, such as maximum bandwidth a client can handle in terms of receiving, managing and sending video streams, preferred bandwidth a client can handle in terms of receiving, managing and sending video streams, maximum CPU and memory resources a client can allocate in terms of receiving, managing and sending video streams, preferred CPU and memory resources a client can handle in terms of receiving, managing and sending video streams and display resolution.

Window metadata received by the collaboration server **104** may include Title (e.g. application name, file name),

Content (=text, images, video, etc.), Type (regular window, full-screen, popup, tooltip, etc.), Appearance (with/without borders, theme, with/without/toolbars, etc.), Underlying technology (Java, C++, Objective C, Swift, C#, Electron, etc.), User Interface Elements and accessibility information (input fields, text labels, buttons, interactive elements, etc.), Interactivity (can a user interact with it or is it read-only/ blocked for entry), Sequence in a stacked collection of windows, referred to as a Z-Index, Size, Position (on which display does it appear and at which coordinates), Relationships (e.g., by which user or also other application window was it opened, which other windows has it opened, which windows have to close once this window is closed), Edit state (e.g., are there unsaved changes), Which user interacts with it (e.g., mouse hovers, clicks, or types), Which user looks at it (e.g., via gaze tracking), Which user could technically see it (because it's in her foreground), and which sound and audio signals the window emits.

Collaboration server **104** calculates required quality parameters for each window across all users **204**. The collaboration server **104** then instructs sending clients about quality parameters each window should have **206**. Example instructions may specify: (1) “@User C: send window X in resolution 540x400 pixels using codec AV1 with quality level 47 to User A, in 1080x800 pixels using codec H264 with quality setting 2 to User B”, (2) “@User A: send window Y with a frame rate of 15 FPS to all other users” and (3) “@User B: suspend sending window Z as no user is looking at it right now”.

The sending client **102_1** captures the window instructions **208** and then sends window content **210**. The content may be sent to the collaboration server **104**, which assembles video streams for individual participating users **212**. Alternatively, as shown with arrow **214**, the content may be sent using a peer-to-peer mechanism. The receiving clients **102_2** receive the window content **216**.

Consider the following scenario. User A, B, C, and D connect. User A, B, C have a high bandwidth, user D has a low bandwidth. User A shares a window but User B and C have other windows in the foreground so would not be able to see it. Only user D would see it because he does not have any other windows open. Therefore, the server determines that the window by User A is shared in a low quality/ resolution and using a special low-bandwidth codec to accommodate. The server could determine to send an additional high resolution stream (e.g. via once User B pulls User A's window in the foreground to make sure she sees it in a high quality.

FIG. 3 illustrates a sequence of operations to determine and configure quality levels for shared windows. More particularly, FIG. 3 illustrates the gathering of window visibility criteria for the composite window collection. A first consideration is whether the window is visible for a user or was it recently visible **300**? The system could calculate this based on the currently displayed windows and how they are stacked on top of each other. For example, it may be determined that a given window that is about to be shared would not even be visible to the receiving user because it would be obstructed by another window. The user might also be moving a window across the screen. While that is happening the client could predict that a shared window that was previously obstructed will soon be visible and therefore has to be displayed. A user could also manually deactivate seeing windows that were shared with him. If that was done, the windows would not be visible (and therefore would not

have to be shared with that user). If a window is visible the quality level can be increased. If a window is not visible, the quality level can decrease.

The next window visibility consideration in FIG. 3 is whether the window is in focus by any user or was it recently in focus **302**? Operating systems track which window is in focus for a user—which often means that it looks slightly different to indicate to the user that she can type into the window. In most operating systems only one window can be in focus at a time so it is fairly easy to retrieve. If a window is in focus, the quality level can be increased. If the window is not in focus, the quality level can be decreased.

It can also be determined if the window is being viewed by any user or if it was recently viewed **304**? This could be determined by gaze tracking (see below) or also by the fact that a user sits in front of a computer (e.g., by analyzing the webcam picture), moves the mouse over a window or even actively types into it. If the window is being viewed, the quality level can be increased. If the window is not being viewed, the quality level can be decreased.

One can also evaluate which user has the highest resolution of any participating user **306**? Resolutions may then be balanced in accordance with pre-determined minimum resolution standards per user.

One can also consider whether the mouse pointer is on top or in proximity of the window or not **308**? This could be done simply by comparing X/Y coordinates of the mouse pointers and the position of windows. If the mouse point is proximate to the window, window resolution may be increased; otherwise it may be decreased.

Finally, one can assess whether the receiving client processes high quality streams **310**? This may be based on bandwidth, CPU and memory resources.

FIG. 4 illustrates sharing individual windows with individual users using different approaches. Client A, a sender, shares Window A with a 3D game and Window B with a text editor. The windows are transmitted to the server in different ways due to their unique properties. In particular, Window A is sent as a video feed to collaboration server **104** and Window B is sent as structured content to the collaboration server **104**.

The collaboration server **104** converts the streams if necessary and sends the information to each participating client in the most appropriate way for each particular client. In this case, Client C might receive the stream of Window B as a video feed because its network might be overloaded so that it would be more beneficial to send the information as one joint video stream, which might then be disassembled again by Client C upon reception. That is, client C receives one video stream—here the two shared windows, e.g. appearing side-by-side, in a combined image/feed. It would also receive related metadata like window positions, sizes, and audio signals and would use that information to cut out window A and B into two separate image feeds/video streams which would then be projected into window A and B on client C to appear as distinct windows. Audio of a shared window can be played if the window is in focus by the receiving user.

Client B may receive a video feed for the 3D game and separate structured content for the text editor.

The content delivery strategy may be informed by a consideration whether the content would be in focus by a local or remote user (so the remote client would need to send this information so that the capturing client could react accordingly). Another consideration is if they could be fully or partially seen by a local or remote user (so the remote client would need to send this information so that the

5

capturing client could react accordingly). Another consideration is if a remote user's mouse pointer or finger would be in proximity, moving towards or on top of the window. Another consideration is if they would be watched by a remote user (e.g., sensed via eye/gaze tracking). Another consideration is if they would be picked by a user to be shared by clicking on a button that would be displayed above or attached to each window. Another consideration is what type of content they would display (e.g., static high resolution content or a low resolution video or a video game with a high frame rate). The forgoing considerations enable reduced CPU usage on the client side as well as an optimization of bandwidth resources towards content that is most relevant to the participating users.

Windows could also be captured from the local user's desktop into one joint full-screen video stream with a transparent background, without the user's desktop background and without windows that are not intended to be shared. The desktops are then scaled and overlaid on each other in the same area.

Transparent click through would be used if overlaid on a remote end's desktop, to allow them to interact with their own local windows in the same space. A Z-Index could be kept for each individual desktop, and when a window on that desktop is clicked, all of the windows for that layer are brought to the front.

FIG. 5 illustrates a scenario where the collaboration server takes Window A1 and Window A2 from Client A and Window B1 from client B and presents them in a composite manner on Client C. Client C also displays a resident local Window C1. Thus, in this scenario, two users (Client A and Client B) can share their windows at the same time with Client C, which has a composite window collection from Client A, Client B and Client C.

The background of each desktop of each user might not be shared. The shared window contents are dynamically adjusted to the particular screen layouts and sizes. Users can decide which window they want to share. Users can see from which client a remote window was shared. Users get an indication which shared windows are visible and which are currently viewed by another user. Remote windows could be projected as native windows on a desktop or also as UI elements into a custom application or a website which might run in a browser. Users could decide on a by-window basis what they want to share. Users could see which user a remote window was shared by.

The result shown in FIG. 5 can be based upon a Per Window Stream method where windows are individually captured and sent as one stream per window to the remote end. Their current state could be monitored, to determine if they are obscured by another window, and only the portion of their image that would be visible to remote users is transmitted, or the stream is entirely paused in this scenario. The streams could then be recomposited, scaled, and placed together in varying positions, either related to the source desktop position, or in a completely different configuration.

Those streams could either then be composited into a single native window, the interaction events mirrored to the window on the other side, or could be composited into a single transparent overlay, using the same interaction mirroring and transparent clickthrough method as the single stream approach.

Windows can be presented as individual HTML elements in a browser-based client. Users can interact with these HTML elements (e.g., move, resize, maximize, minimize, zoom, scroll, etc.) and the interactions are applied on the native side to the actual native shared windows. Remote

6

interactions feel much more natural and different users could focus on different elements at the same time because the HTML elements are rendered separately instead of all as part of one sole video element, as is the case with existing solutions.

FIG. 6 illustrates an all-to-all composite window collection sharing scenario. Client A has local Window A1 and local Window A2, plus remote Window B1 from client B and remote Window C1 from client C. Client B has local Window B1, plus remote Window A1 and Window A2 from client A and remote Window C1 from client C. Client C has local Window C1, plus remote Window A1 and Window A2 from Client A, and remote Window B1 from client B. Client D has remote Window A1 and Window A2 from Client A, and remote Window B1 from client B.

Thus, multiple users can share windows with each other at the same time. Each user can focus on a different window, whether their own or by another user. Each user can decide to hide or show any window of another user (here: Client D has decided to hide Window C1 by Client C (shown with dashed lines) so it is not actually visible).

Client A grabs the image/application information from the two windows and sends them to Client C (either as one joint stream as discussed above or as individual streams per window). Client C receives the video/window streams, creates empty native application windows and projects the content into it. That way Client C makes the windows from Client A appear as if they were local.

Not only could the sequence of windows be de-synched (i.e., windows could have a different sequence/Z-index for each other), but also each window position can be altered so that users could move the same windows into different spots on their desktops. Due to the fact that users can see the same windows but in different places and sequences, also mouse pointers might only be displayed when hovering over a certain window or a certain display area and they might also be shown in a user-specific sequence (e.g., User A's window might hide User B's mouse pointer which is hovering behind it over User C's window).

Because the described solution can share and recreate individual windows across multiple users, it also enables users to decide to hide individual shared windows. Each user can decide for themselves which windows are shared. Multiple users can type and click into different windows at the same time. The central collaboration server 104 coordinates the control signals so that they are only sent to the relevant clients, which might interact via a peer-to-peer (P2P) connection and therefore negotiate the control flow directly between them. Clients that receive control signals might inject the controls at system level or also into particular windows, depending on the attributes of the shared application or the overall operating system.

Users who remote control one window should not affect users negatively who interact with another window (e.g., steal their typing cursor or change their window sequence). Users should be able to type or click into or interact with different windows by the same or different users at the same time. Example: Alice should be able to type into Bob's window A while Bob types into Bob's window B, or also Alice's window C. The system would have to inject Alice's commands into Bob's window without making his cursor or focus change to that window, thereby changing the typical behavior of single user operating systems like Apple macOS®, Microsoft Windows®, Linux®, Apple iOS®, and Android®. It would work differently from typical remote desktop and remote collaboration solutions that apply remote controls at system level.

Users should be able to see windows in a different sequence by the same or different users at the same time. For example, Alice should be able to look at her window C which obstructs Bob's window B for her, but Bob could look at it while this obstructs Alice's window C for him. Users should be able to copy & paste content from a window from one user into a window of another user. For example, Alice could copy text from Bob's window A into Chris' window C. The system would have to determine and coordinate when the copy interaction would be executed, into which clipboard the text should be copied and when it would be pasted from which clipboard it should be pasted. Users could even drag & drop content from a window from one user into a window of another user. For example, Alice could drag a file from Bob's macOS Finder® window into Chris' Windows Explorer® window. The file would be directly copied from Bob to Chris, potentially routed through the collaboration server **104**. The system would also coordinate which remote mouse pointer should be visible to which user, in addition to their positioning and the injection of remote input based on their position.

FIG. 7 illustrates Client A displaying local Window A1 and remote Window B1 from Client B. Each Window includes indicia of current user activity, such as who is typing in a Window at any given time. In the case of Client A, Window A1 indicates that "Client B is typing" and Window B1 indicates that "Client A is typing and Client C is typing". Client B and Client C have similar attributes.

It should be appreciated that some clients might support focusing on/applying input into several windows at once, others only into one window at a time. Some clients might run on macOS®, others on Windows®, Linux®, mobile operating systems or as web clients. Clients might have different resolutions and screen layouts. Clients might also differ in terms of interaction modalities—some might support mouse and keyboard, others only touch interaction. The system would need to convert input accordingly (e.g., touch interaction into a mouse click) depending on which modality the receiving client supports.

Operating systems might also have different commands for the same interaction. For example, in Microsoft Windows® you can copy content to the clipboard by pressing CTRL+C, in Apple macOS® it is done via Command+C. Or screenshots are taken via PrtScn in Microsoft Windows® but using Shift+Command+3. The collaboration server **104** has to convert the input so that users can control remote clients with commands they are familiar with and apply them on the receiving end in the locally applicable way. The clients might interact via a peer-to-peer (P2P) connection and therefore negotiate the control flow directly between them.

An embodiment of the present invention relates to a computer storage product with a computer readable storage medium having computer code thereon for performing various computer-implemented operations. The media and computer code may be those specially designed and constructed for the purposes of the present invention, or they may be of the kind well known and available to those having skill in the computer software arts. Examples of computer-readable media include, but are not limited to: magnetic media such as hard disks, floppy disks, and magnetic tape; optical media such as CD-ROMs, DVDs and holographic devices; magneto-optical media; and hardware devices that are specially configured to store and execute program code, such as application-specific integrated circuits ("ASICs"), programmable logic devices ("PLDs") and ROM and RAM devices. Examples of computer code include machine code, such as

produced by a compiler, and files containing higher-level code that are executed by a computer using an interpreter. For example, an embodiment of the invention may be implemented using JAVA®, C++, or other object-oriented programming language and development tools. Another embodiment of the invention may be implemented in hard-wired circuitry in place of, or in combination with, machine-executable software instructions.

The foregoing description, for purposes of explanation, used specific nomenclature to provide a thorough understanding of the invention. However, it will be apparent to one skilled in the art that specific details are not required in order to practice the invention. Thus, the foregoing descriptions of specific embodiments of the invention are presented for purposes of illustration and description. They are not intended to be exhaustive or to limit the invention to the precise forms disclosed; obviously, many modifications and variations are possible in view of the above teachings. The embodiments were chosen and described in order to best explain the principles of the invention and its practical applications, they thereby enable others skilled in the art to best utilize the invention and various embodiments with various modifications as are suited to the particular use contemplated. It is intended that the following claims and their equivalents define the scope of the invention.

The invention claimed is:

1. A non-transitory computer readable storage medium with instructions executed by a processor to:
 - specify a group of collaborators;
 - poll each collaborator in the group of collaborators for window information for each window to be shared among the collaborators in a composite window collection, wherein the window information includes end user device attributes for each collaborator and window metadata for each window to be shared among the collaborators in the composite window collection;
 - calculate required parameters for each window to be shared among the collaborators in the composite window collection, wherein the required parameters include window visibility criteria in the composite window collection, wherein the window visibility criteria specifies whether a window is being viewed by a collaborator; and
 - instruct sending clients in the group of collaborators on required parameters for each window to be shared among the collaborators in the composite window collection.
2. The non-transitory computer readable storage medium of claim 1 wherein the window visibility criteria specifies whether a window is visible in the composite window collection.
3. The non-transitory computer readable storage medium of claim 1 wherein the window visibility criteria specifies whether a window is in focus by a collaborator.
4. The non-transitory computer readable storage medium of claim 1 wherein the window visibility criteria specifies whether a pointer is proximate to a window being viewed by a collaborator.
5. The non-transitory computer readable storage medium of claim 1 further comprising instructions executed by the processor to selectively hide a window in the composite window collection.
6. The non-transitory computer readable storage medium of claim 1 further comprising instructions executed by the processor to enable different users to simultaneously supply input into different windows without interfering with each other.

7. The non-transitory computer readable storage medium of claim 1 further comprising instructions executed by the processor to enable a first user to move content from a first window to a second window controlled by a second user.

8. The non-transitory computer readable storage medium of claim 1 further comprising instructions executed by the processor to provide indicia of current user activity within a window of the composite window collection.

9. The non-transitory computer readable storage medium of claim 1 further comprising instructions executed by the processor to transfer content between windows in the composite window collection.

10. The non-transitory computer readable storage medium of claim 1 further comprising instructions executed by the processor to transfer video stream content from a first window to a second window.

11. The non-transitory computer readable storage medium of claim 1 further comprising instructions executed by the processor to transfer composited Hypertext Markup Language (HTML) content from a first window to a second window.

12. The non-transitory computer readable storage medium of claim 1 further comprising instructions executed by the processor to transfer audio content from a first window to a second window.

13. The non-transitory computer readable storage medium of claim 1 further comprising instructions executed by the processor to translate a command from a first operating system to an equivalent command in a second operating system.

14. A non-transitory computer readable storage medium with instructions executed by a processor to:

specify a group of collaborators;

poll each collaborator in the group of collaborators for window information for each window to be shared among the collaborators in a composite window collection, wherein the window information includes end user device attributes for each collaborator and window metadata for each window to be shared among the collaborators in the composite window collection;

calculate required parameters for each window to be shared among the collaborators in the composite window collection, wherein the required parameters include window visibility criteria in the composite window collection;

instruct sending clients in the group of collaborators on required parameters for each window to be shared among the collaborators in the composite window collection; and

enable different users to simultaneously supply input into different windows without interfering with each other.

15. The non-transitory computer readable storage medium of claim 14 wherein the window visibility criteria specifies whether a window is visible in the composite window collection.

16. The non-transitory computer readable storage medium of claim 14 wherein the window visibility criteria specifies whether a window is in focus by a collaborator.

17. The non-transitory computer readable storage medium of claim 14 wherein the window visibility criteria specifies whether a window is being viewed by a collaborator.

18. The non-transitory computer readable storage medium of claim 14 wherein the window visibility criteria specifies whether a pointer is proximate to a window being viewed by a collaborator.

19. The non-transitory computer readable storage medium of claim 14 further comprising instructions executed by the processor to selectively hide a window in the composite window collection.

20. The non-transitory computer readable storage medium of claim 14 further comprising instructions executed by the processor to enable a first user to move content from a first window to a second window controlled by a second user.

21. The non-transitory computer readable storage medium of claim 14 further comprising instructions executed by the processor to provide indicia of current user activity within a window of the composite window collection.

22. The non-transitory computer readable storage medium of claim 14 further comprising instructions executed by the processor to transfer content between windows in the composite window collection.

23. The non-transitory computer readable storage medium of claim 14 further comprising instructions executed by the processor to transfer video stream content from a first window to a second window.

24. The non-transitory computer readable storage medium of claim 14 further comprising instructions executed by the processor to transfer composited Hypertext Markup Language (HTML) content from a first window to a second window.

25. The non-transitory computer readable storage medium of claim 14 further comprising instructions executed by the processor to transfer audio content from a first window to a second window.

26. The non-transitory computer readable storage medium of claim 14 further comprising instructions executed by the processor to translate a command from a first operating system to an equivalent command in a second operating system.

27. A non-transitory computer readable storage medium with instructions executed by a processor to:

specify a group of collaborators;

poll each collaborator in the group of collaborators for window information for each window to be shared among the collaborators in a composite window collection, wherein the window information includes end user device attributes for each collaborator and window metadata for each window to be shared among the collaborators in the composite window collection;

calculate required parameters for each window to be shared among the collaborators in the composite window collection, wherein the required parameters include window visibility criteria in the composite window collection;

instruct sending clients in the group of collaborators on required parameters for each window to be shared among the collaborators in the composite window collection; and

translate a command from a first operating system to an equivalent command in a second operating system.

28. The non-transitory computer readable storage medium of claim 27 wherein the window visibility criteria specifies whether a window is visible in the composite window collection.

29. The non-transitory computer readable storage medium of claim 27 wherein the window visibility criteria specifies whether a window is in focus by a collaborator.

30. The non-transitory computer readable storage medium of claim 27 wherein the window visibility criteria specifies whether a window is being viewed by a collaborator.

11

31. The non-transitory computer readable storage medium of claim **27** wherein the window visibility criteria specifies whether a pointer is proximate to a window being viewed by a collaborator.

32. The non-transitory computer readable storage medium of claim **27** further comprising instructions executed by the processor to selectively hide a window in the composite window collection.

33. The non-transitory computer readable storage medium of claim **27** further comprising instructions executed by the processor to enable different users to simultaneously supply input into different windows without interfering with each other.

34. The non-transitory computer readable storage medium of claim **27** further comprising instructions executed by the processor to enable a first user to move content from a first window to a second window controlled by a second user.

35. The non-transitory computer readable storage medium of claim **27** further comprising instructions executed by the

12

processor to provide indicia of current user activity within a window of the composite window collection.

36. The non-transitory computer readable storage medium of claim **27** further comprising instructions executed by the processor to transfer content between windows in the composite window collection.

37. The non-transitory computer readable storage medium of claim **27** further comprising instructions executed by the processor to transfer video stream content from a first window to a second window.

38. The non-transitory computer readable storage medium of claim **27** further comprising instructions executed by the processor to transfer composited Hypertext Markup Language (HTML) content from a first window to a second window.

39. The non-transitory computer readable storage medium of claim **27** further comprising instructions executed by the processor to transfer audio content from a first window to a second window.

* * * * *